

in this issue

Official Newsletter of PROFIBUS International www.profibus.com

PI NEWS

(PAGES 1, 3)

- » THE PI PROMISE
- » PROFIBUS PA ROAD SHOW
- » SPS/IPC/DRIVES UPDATE
- » ISA UPDATE

APPLICATIONS

(PAGE 2)

- » USA / AIRPORTS
- » USA / PRINTING PRESSES

PRODUCT GALLERY

(PAGES 3)

- » GATEWAYS GALORE ...
- » ... AND ANOTHER
- » EXPANDABLE CONTROL
- » TERMINATORS
- » BUS CONNECTOR
- » REMOTE I/O WITH DTM
- » DP-V2 ANALYZER

GENERAL NEWS

(PAGE 3)

- » CALLING USA
- » EVENTS

AROUND THE WORLD

(PAGE 4)

- » PROFINET ROAD SHOW STARTS TO ROLL IN EUROPE
- » BELGIUM
- » USA
- » UK

THE PI PROMISE: “WE’LL NEVER STAND STILL!”

“PROFIBUS never stands still”: that was the key message conveyed to a highly successful press conference held in Germany, September. More than 30 journalists attended to hear PROFIBUS International (PI) explain the latest trends in PROFIBUS automation technology.

Other main messages were that PI helps members ...

- » expand core business
- » guarantee the future
- » convert progress into products and services

For example, PI is the only fieldbus organisation that

accommodates new application profiles, and interest in Working Groups (e.g. “Weighing and Dosage”, “Identification Systems” and “Devices for Semiconductor Industries”) is very high.

With PROFINet technology, PI proves again that a solution is more than just its technical specification. PI offers full support for PROFINet, starting with experts in technical and marketing working groups who operate in close contact with the marketplace. This continues with support from PROFINet ...

continued on Page 3

» TRADE FAIRS

SPS/IPC/DRIVES
Electric Automation
Systems and Components
Exhibition & Conference
26 - 28 Nov. 2002 Nürnberg



GERMANY

At SPS/IPC/DRIVES, visit the PROFIBUS Booth in **Hall 5-145** to get all the latest information about PROFIBUS and PROFINet.

Supported by multivendor live-demos, experts will provide detailed information and answer questions for the following:

- » PROFINet – more than just Ethernet
- » PROFIsafe
- » PROFIdrive“ for motion control

Fieldbus organisations, in cooperation with VDMA and ZVEI, are participating in presentations and panel discussions at another ‘industrial communication forum’ (icf) close to the PROFIBUS Booth.

USA

The PTO hosted an exhibition of PROFIBUS products for more than 30 vendors on



Booth 1031 at the ISA 2002 in Chicago.

Visitors saw an active display of PROFIBUS DP and PA products, PROFIsafe and PROFINet.

CATCH UP WITH THE PROFIBUS PA

PROFIBUS Nutzer Organisation will organize a roadshow

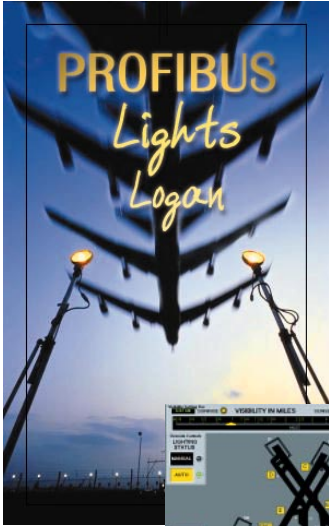


along with 16 member companies, offering designers, operators and maintenance personnel the chance to learn more about the integration capability of PROFIBUS within production processes. There will also be opportunities to discuss experiences with end users. PROFIBUS will present itself as a plantwide, fully-integrated automation technology, for

use in upstream, mainstream and downstream applications. Subjects will include ‘Modernizing, Enlargement and Redesign’, ‘Operation, Availability and Safety’ and ‘Service, Maintenance and Diagnosis’. The Roadshow will be at Hanover 4th November, Cologne 5th November, Frankfurt 6th November and Salzburg, Austria, 7th November.

» APPLICATIONS

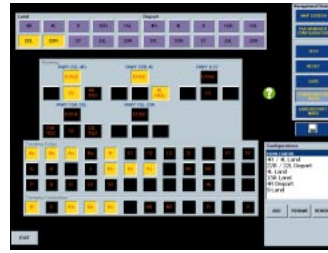
USA / AIRPORTS



The USA's first airport to have computerized airfield lighting uses PROFIBUS communications. Boston's Logan, established in 1923, has al-

ways been an airport of 'firsts'. Recent upgrades make use of latest technology, innovative software solutions, improved programmable logic controllers (PLCs), and better bus technology. The system was designed by Edwards and Kelsey.

S7-400 PLCs replaced older units. All equipment is housed in a secured area of the airport property, referred to as "the Vault", and this also houses two redundant PLCs that are at the heart of control. Four levels of redundancy are built in: controllers;

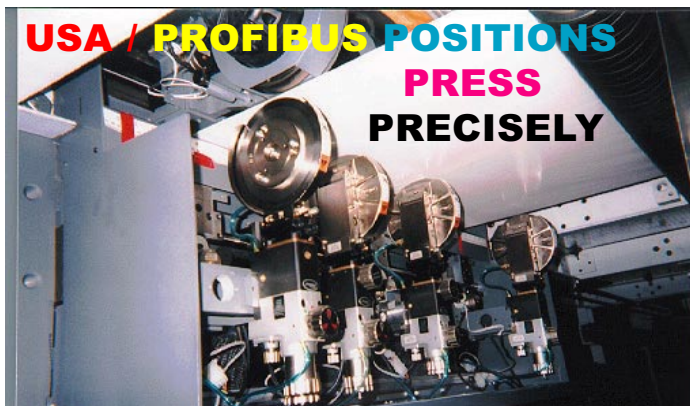


PROFIBUS communications; PROFIBUS I/O; power sources. OLMs allow Ethernet to be used and fiber cabling uses a self-healing 'spanning-tree' architecture for redundancy. Also, if an OLM module fails, the PROFIBUS I/O module has a copper connection to an adjacent OLM that takes over the defective module's responsibilities.

The PROFIBUS wiring and the fiber were laid down inside the existing metal race-

way. The bright purple color of the PROFIBUS cable (jokingly nicknamed "Barney cable") makes PROFIBUS cables highly visible and underscores the fact that it barely takes up any space in the channel. Its weight is negligible and the raceway is now free for other expansion projects.

The use of PROFIBUS provides extremely fast response times. The built-in features allow easy configuration, and additional drops can be added easily. PROFIBUS also greatly simplifies the time needed for installing cabling. **Edwards and Kelsey:** KLambert@EKMail.com



Heidelberg's commercial web offset printing presses use latest motion control technologies and computer interfaces for high quality, high volume color printing.

Engineers at Heidelberg's Web Systems Division in Dover, New Hampshire recently updated the product line to use PROFIBUS-based distributed I/O systems, to reduce the miles of field wiring required for

one of these large machines (they average 137 feet long!). The choice reflects Heidelberg's interest in incorporating a fieldbus that has worldwide acceptance, especially in Europe, a key market for Heidelberg.

Paper runs through a press at up to 3000 feet per minute. Multiple pages can be printed simultaneously across the width, and at the end of the press, the

continuous paper is slit into ribbons, then stacked, cut, and folded.

An industrial PC provides overall system control and HMI functions for everything from speed to ink concentration and the slitter.

The new slitting system uses an S7 PLC and RMC100 motion controllers from Delta Computer Systems of Vancouver, WA, which control up to ten axes of revolving blades and anvils. PROFIBUS connects the motion controllers to the Siemens PLC and the industrial PC while the RMC supports direct PROFIBUS interfaces without requiring special modules and communicates directly with the PLC. Engineers chose the Delta controllers

because of their accuracy of positioning, PROFIBUS compatibility, and ease of programming and tuning.

The distributed I/O eases connections between the IPC and multiple system elements. PROFIBUS is 'daisy-chained' between the computer and control systems; each system has a unique address on the bus, which the computer references when it writes instructions or interrogates status.

PROFIBUS allows the use of best-of-class components, contributing to lower manufacturing costs, easier assembly and maintenance, and easier upgrades. **Delta Computer Systems:** johanson@deltacompsys.com or +1 360 254 8688

» PRODUCT GALLERY

GATEWAYS GALORE ...

The popularity of PROFIBUS is emphasized by this plethora of connectivity and gateway products for Allen-Bradley DF1, ModBus, ModBus Plus, HART and simple ASCII. Configuration and data mapping are easily accomplished through the editing of text-based configuration files. All modules are DIN-rail mounted units. **Prolinx Communications:** www.prolinxgateways.com



... AND ANOTHER

Profilink 908 converts Modicon Quantum and Series 800 I/O packets to PROFIBUS DP. For local I/O the processor is replaced with a RIO drop card, each configured as a separate slave. Up to 32 drops are supported and diagnostics are retained. **Process Computer Technology:** +1 713 861 4808 or bwerner@pct-inc.com



EXPANDABLE CONTROL

690PLC+, Kuhnke's extendable control system can be used with PROFIBUS to implement larger de-centralized structures. Integrated analog and digital I/O allow for processing of signals without additional devices. A counter allows for drive, positioning and fast counting tasks. **Kuhnke:** sales@kuhnke.de or +49 (0) 45 23 4 020



TERMINATORS

T1H-PBC is a slave that can be plugged into the network interface of Terminator I/O systems. It reports identification data, diagnos-



tic information and control parameters. H2-PBC PROFIBUS Base Controller allows a DirectLOGIC 205 I/O sub-system to be linked to a PROFIBUS master. **Automation Direct:** jgerborg@automationdirect.com or +1 770 889 2858

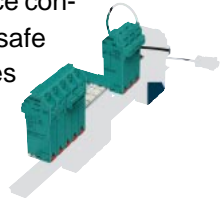
BUS CONNECTOR

EasyConn is a 'high-end' network connector providing test functions for implementation and trouble shooting. LEDs indicate voltage supply and bus-activity (Tx/D), also checking whether the termination is OFF or ON, a wrong termination resistance or a false surge impedance. An integrated controller works at up to 12 Mbs. **Profichip:** urathfelder@profichip.com



REMOTE I/O WITH DTM

The Pepperl+Fuchs Remote Process Interface connects field signals from hazardous areas to safe areas. Redundant gateways, power supplies and a redundant internal bus provides high availability. RPI includes a DTM which can be configured and parameterized by PACTware or other Engineering Tool. **Pepperl + Fuchs:** akern@de.pepperl-fuchs.com or +49 621 776 1388 or www.pepperl-fuchs.com



DP-V2 ANALYZER

Softing's new bus Analyzer includes analysis functions for isochronous cycles and lateral communication. It uses plain text decoding and does not require detailed protocol knowledge. **Softing AG:** +49 89 45656-379 or www.softing.com



» GENERAL NEWS

CALLING USA

MESCO, accredited PROFIBUS Competence Center in Germany, has opened its doors to the US market, offering consulting, hardware and software engineering, tooling and seminars. Their main mission is the development of complete fieldbus products, development of intrinsic safe transmitters to EX-approval and software tools for integration of field-

devices in PLC systems. MESCO Engineering. Contact: www.mesco.de or Steffi.Elschner@mesco.de

EVENTS

Seminars, workshops, training, exhibitions and conferences ... and many other important dates and news from the world of automation are listed on the PROFIBUS website. For more information visit 'News & Events' at www.profibus.com

THE PROFIBUS PROMISE:

continued from Page 1

... Competence Centers and extends to quality assurance. The first PROFInet test laboratories will be established by the end of 2002.

A major focus therefore is to make PROFIBUS as easy to use as possible. PI is putting focus on the development of high-performance, easily used engineering tools. Other examples include validation of PROFIBUS systems

and Web Based Training.

PROFIBUS International is well-prepared to meet the high expectations its special position demands. By building a broad international base and opening up new application areas, PROFIBUS International helps to expand core business for member companies and protects their investments. Expect the next issues of PROFInews to tell you more!

» AROUND THE WORLD

After the successful series of PROFInet workshops, the European PROFInet Roadshow recently started rolling in France (Paris on Sept. 17, Lyon on Sept. 18, Strasbourg on Sept. 25). The number of participants showed that there is extremely high interest in PROFInet. The first event in Paris attracted around 100 participants (pictured right with the Road Show team), both from the users' and the manufacturers' sides. Next stop is Milan (Italy) on Oct. 22, followed by Birmingham, UK (TEAM Trade Fair) in November 2002. Dates in Japan (Tokyo and Osaka) have just been added for January 2003.



» REGIONAL ASSOCIATIONS

Australia - Mr. Andrew Janiak
Tel: +61 3 9761 5599; Fax: +61 3 9761 5525
Email: australia@profibus.com

Belgium - Mr. Herman Looghe
Tel: +32 2 706 80 00; Fax: +32 2 706 80 09
Email: belgium@profibus.com

Brazil - Mr. Paulo Camargo
Tel: +55 11 3833 4958; Fax: +55 11 3833 4183
Email: brazil@profibus.com

China - Mrs. Wang Jun
Tel: +86 10 62 02 92 18; Fax: +86 10 62 01 78 73
Email: china@profibus.com

Czech Republic - Mr. Zdenek Hanzalek
Tel: +420 2 2435 7610; Fax: +420 2 2435 7610
Email: czechrepublic@profibus.com

Denmark - Mr. Kim Husmer
Tel: +45 40 78 96 36; Fax: +45 44 65 96 36
Email: denmark@profibus.com

Finland - Mr. Taisto Kaijanen
Tel: +35 8 9 5307259; Fax: +35 8 9 5307360
Email: finland@profibus.com

France - Mrs. Christiane Bigot
Tel: +33 1 45 74 63 22; Fax: +33 1 45 74 03 33
Email: france@profibus.com

Germany - Mr. Peter Wenzel/Mr Volker Oestreich
Tel: +49 721 96 58590; Fax: +49 721 96 58589;
Email: germany@profibus.com

Ireland - Mr. Tony Donnelly
Tel: +353 45 868615; Fax: +353 45 868182
Email: ireland@profibus.com

Italy - Mr. Maurizio Ghizzoni
Tel: +39 049 8705361; Fax: +39 049 870 3255
Email: pri@profibus.com

Japan - Mr. Shinichi Motoyoshi
Tel: +81 3 3570 3034; Fax: +81 3 3570 3064
Email: japan@profibus.com

Korea - Mr. Ahn Young-in
Tel: +82 2 523 5143; Fax: +82 2 523 5149
Email: korea@profibus.com

Netherlands - Mr Dolf van Eendenberg
Tel: +31 33 469 0507; Fax: +31 33 461 6638
Email: netherlands@profibus.com

Norway - Mr. Kai-Atle Myrvang
Tel: +47 909 88640; Fax: +47 904 05509
Email: norway@profibus.com

Russia - Mrs. Olga Sinenko
Tel: +7 095 742 68 28; Fax: +7 095 742 68 29
Email: russia@profibus.com

Slovakia - Mr Richard Balogh
Tel: +421 7 6029 1131; Fax: +421 2 6542 9051
Email: slovakia@profibus.com

South-East Asia - Mr. Bernd Schael
Tel: +65 6740 7607; Fax: +65 6740 7141
Email: southeastasia@profibus.com

Southern Africa - Mr. Vivian MacFadyen
Tel: +27 11 397 2900; Fax: +27 11 397 4428
Email: southernafrica@profibus.com

Sweden - Mr. Peter Bengtsson
Tel: +46 4 51 49 460; Fax: +46 4 51 89 833
Email: sweden@profibus.com

Switzerland - Ms. Karin Beyeler
Tel: +41 32 672 03 25; Fax: +41 32 672 03 26
Email: switzerland@profibus.com

UK - Mr. Bob Squirrell
Tel/Fax: +44 1489 589574
Email: uk@profibus.com

USA & CANADA - Mr. Michael Bryant
Tel: +1 480 483 2456; Fax: +1 480 483 7202
Email: usa@profibus.com

Editor: Geoff Hodgkinson
1 West St, Titchfield, Hants, UK PO14 4DH.
Tel: +44 (0) 1329 846166; Fax: +44 (0) 1329 512063 Email:geoff@ggh.co.uk

Published by: **PROFIBUS International**
Haid-und-Neu-Str. 7
D-76131 Karlsruhe, Germany

News from the Regional PROFIBUS Associations. If you have a report please send it to the editor at the address given bottom right of this page.

BELGIUM

In October, the Belgium PROFIBUS Organization organized a seminar for the Process Industry, during which decision makers saw a presentation of the cost-cutting potential and increased plant availability resulting from PROFIBUS installations. A live demo was used to demonstrate these benefits, using Process Automation Systems and SCADA systems communicating with field devices such as temperature, pressure, level and analytical, flow and remote I/O. Subjects such as Asset Management, cost of ownership, diagnostics and FISCO were discussed in detail. The event was supported by large end users such as ADPO, Egemin, ACB and Eco-vision and Duvel.

USA

In July, the PROFIBUS Trade Organization sponsored a PROFInet and PROFIsafe seminar in Detroit. Included were presentations by Mike Bryant from the PTO, Ron Mitchell from the PROFIBUS Interface Center and Ralph Buesgen, Product Manager from Siemens. Mike hosted the event and gave a rousing PROFInet demonstration. Ron presented PROFIsafe and how it is being adopted worldwide. To complete the day, Ralph presented a PROFInet application story in the automotive industry. More than 70 people attended from Detroit and the surrounding areas.

UK

In UK, courses for Certified Engineers and Certified Installers continue to be run by the PROFIBUS Competence Center at Manchester Metropolitan University. The TEAM trade fair in Novem-

ber will feature the day-long PROFInet Road Show and a special booth will be helping end users understand the benefits of using PROFIBUS. A successful 'Process Made Easy' seminar at Endress and Hauser in Manchester was held in early October, with over 40 delegates hearing from Andy Verwer (MMU), Sarabjit Purewal (HSE), Mike O'Neill (Hawke Fieldbus), Eugenio F da Silva (E+H) and members of the PROFIBUS UK Steering Committee. FDT/DTM and a Case Study from Johnson Mathey were also presented.

Seminars, workshops, training, exhibitions and conferences... and all other important dates and news from the world of automation are listed on the PROFIBUS website. Just visit 'News & Events' at www.profibus.com